

Student Housing



Enjoy All That
New England Has to
Offer

NORTHEASTERN
— BAPTIST COLLEGE —

HOUSING OVERVIEW

Student housing is overseen by the Office of Student Services. The Student Services office exists to support students in their transition through college. Many times that involves trials large and small. When college students face the challenges associated with becoming an adult, Student Services is there with support, counseling, mentorship, and prayer.

Here at Northeastern Baptist College we seek to provide student housing that is affordable and safe. Above all of that, however; is the desire to create an environment that encourages spiritual development and is conducive to growing each unique student who has been called to NEBC. All of our Student Life staff focus on the student as an individual in their encouragement and mentorship.

- Tony Levesque, Dean of Students

Student Housing is more than just a
place to live its a place to grow



Meet our Staff



Tony Levesque
Dean of Students



Adelle Woodcock
Student Services
Coordinator



Ed Lucas
Safety Officer &
Facilities Manager

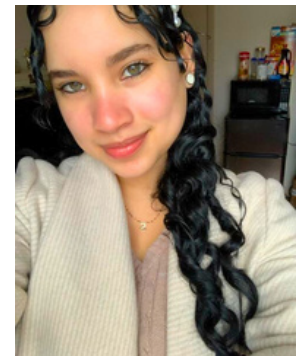
Resident Assistants



Salem Ingles



Aaron Spiller



Shelly Reynoso

The Residence Assistants, or RAs play a multi faceted role at NEBC. They are at once a first point of contact for students who have housing related questions and at the same time they serve as student advocates and mentors focused on the spiritual wellbeing of the students. These upper-classmen/women participate in weekly training where they are poured into by the Director of Student Services and in turn learn to pour into the students in their charge.

Did you know...

Life Skills

Students learn to cook in our neatly appointed kitchens



Layout

JJ Hall has seven different floorplan styles



Community

95%

95% of our full time degree seeking students live on campus

Committed

Weekly small group devotionals & prayer time



Available

Student Services staff are available 24 hours a day 7 days a week.



Convenience

Free public transportation

Private Bath

All dorm rooms offer private & semi-private bathrooms with showers and tubs



Options

We offer single style & married student housing



Affordable

Housing costs are one-third that of the average college



12

Support

With a 12:1 student RA ratio, students get personalized support



Parking

Dorm Parking is located right outside of your doorstep





Dorm students
participate in
weekly
devotional time!

Shelly Reynoso

To me, devos are like spiritual coffee. They wake us up, keep us alert, and most importantly, they're the perfect excuse for a break! They provide an opportunity to pause from our academic pursuits and reconnect with our spiritual roots. They are a reminder of the bigger picture, the eternal perspective that transcends our temporal concerns. Devos are the heartbeat of our college community. They're like the Wi-Fi signal that keeps us connected. They encapsulate our shared faith, our pursuit of wisdom, and our commitment to supporting one another. As the RA, it's a privilege to facilitate these precious moments of fellowship and spiritual growth.

Housing Options

Community Style

Community living that offers shared and private rooms. Each room with a private bath and entrance. Cooking and fellowship are done in The Commons. The Commons also offers lounge and study spaces.

Apartment Style

An apartment in every sense. These two bedroom units are available for four singles or one married couple. This housing offers a kitchen, living room, and porch.

	OPTIONS	Private Room	Shared Room	Married Housing	Single Student Housing	AMENITIES	Utilities Included	Wireless Internet Included	Free Laundry	Fully Furnished	Parking
Community Style											
J. J. Hall		✓	✓		✓		✓	✓	✓	✓	✓
Apartment Style											
The Allison Gray Village			✓	✓	✓		✓	✓	✓		✓

All incoming freshmen are assigned to J.J. Hall their first year on campus










JEHOVAH JIREH HALL

Community Style Living

The Lord Provides

Jehovah Jireh Hall is a reminder of how much God has provided to accomplish the mission at NEBC. We began the summer of 2014 with a need for student housing and a \$36.00 donation. The faculty and staff prayed daily for God to multiply those funds to house the students arriving in the fall. Less than 6 weeks later God answered our prayers and J. J. Hall became our first student dorm.

This renovated quaint New England style motel can house up to 35 students in its communal living environment.

-  Located at 250 Main Street in Bennington
-  Available for single, full-time students aged 27 or younger at the start of the first semester in residence
-  Two students are assigned to each dorm room
-  Each dorm room has a private bathroom and shower
-  All utilities, Wi-Fi, and garbage removal are included
-  Mini-blinds are furnished for all windows
-  Laundry room is available with free-use machines
-  On site parking is available and overflow parking is provided when needed
-  Primary housing for incoming freshmen

J.J. Hall has several room sizes and layouts.

The left and right halls serve as the Girls Halls. These rooms are approximately 12x12 with private bath and bunk beds (Rooms 6 - 11)



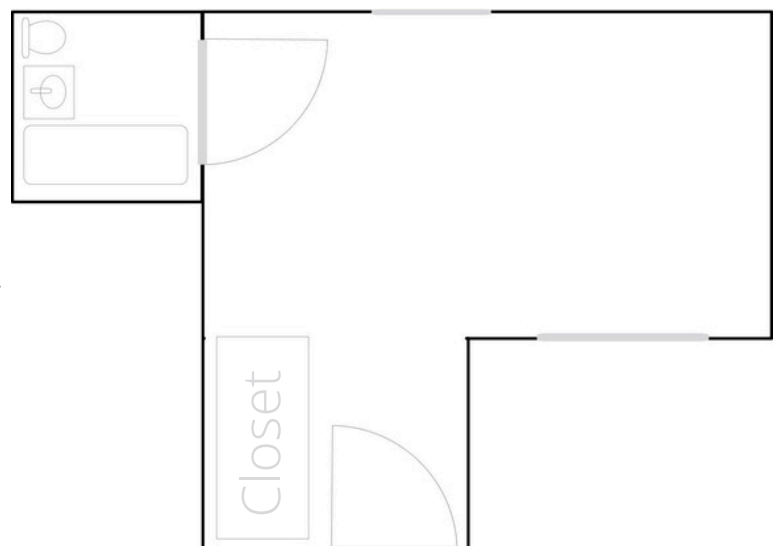
Left Wing rooms are furnished with single twin beds and are approximately 15x12. Some of these rooms serve as triples. (Rooms 1-5)

Right Wing rooms are furnished with bunk beds and are approximately 15x8. This is also where the handicap accessible rooms are located. (Rooms 12-17)



Room Furnishings

- 1 Two-drawer night stand
- 2 Student desks with drawers
- 2 Desk chairs
- 2 Twin beds (single or bunk)
- 1 5-drawer dresser
- 1 Closet with hanging bar and shelf
- 1 floor lamp
- A tub/shower with a curtain liner & hooks
- Sink cabinet with storage
- A towel bar and 2 trash cans



The Commons at J.J. Hall

The common area or "The Commons" as its known is located at J.J. Hall and includes the community kitchen, lounge, and study room. .

Learning how to cook is a great adventure, so why not do it with friends.

The commons kitchen is equipped with stoves, microwaves, toasters, and refrigerator space.

Eat in the dining room or watch a game while sharing a pizza in one of the lounge areas.

Each dorm room is assigned a 24in x 30in cubby to store kitchen items & dry goods.

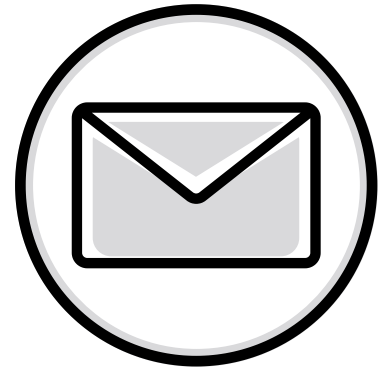


The Yard @ JJ Hall

Grab a hammock from The Commons and come back and relax in The Yard. Picnic tables and chairs are also available in this secluded greenspace. A perfect place to hang out with friends or find some quiet outdoor study space.



Receiving Mail



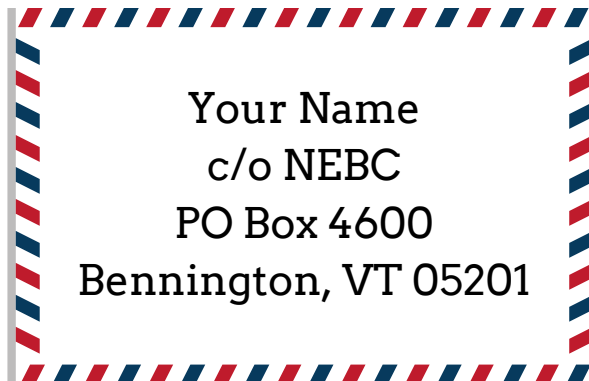
Mailing information is the same for residents at both JJ Hall and the Allison Gray Village.

It is important to note:

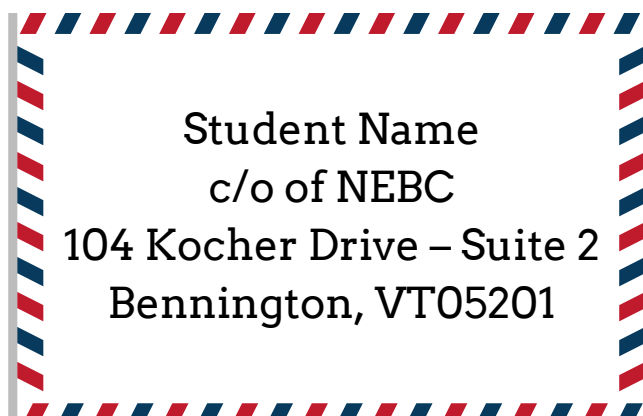
- The US Post Office will not deliver mail to the dorms!
- All mail and packages are received through our campus post office.

To receive your mail, including books and packages, please use the following addresses:

Your Mailing Address:



For UPS and FedEx packages:



Don't Forget to bring...

BEDDING

- Bed pillows
- Blanket or throw
- Body pillow
- Comforter
- Decorative pillows
- Pillow protectors
- Twin sheet set (regular)
- Bed risers (twin room only)

BATHROOM

- Bath towels & face cloth
- Hand towel
- Bathrobe
- Bathroom organizer
- Soap dispenser
- Bath rug
- Shower curtain**
- Shower organizer
- Cleaning supplies

DECORATIONS

- Area Rug
- Desk Lamp
- Bungee or bean bag chair*
- Mirror
- String lights
- Window curtains
- Thumb tacks
- Side table or bookcase

DESK

- Desk lamp
- Desk organizers
- Headphones
- Laptop
- School supplies

EARLY RISERS & MIDNIGHT SNACKERS

- Coffee pot or Keurig
- Mini fridge
- Microwave
- Note: only one per room

LAUNDRY

- Drying rack
- Laundry basket / hamper
- Laundry soap & fabric softener
- Stain remover
- Iron & small ironing board

PERSONAL

- Hair dryer & Flat Iron or curler
- Shampoo & Conditioner
- Shaving products
- Cosmetics & skin care
- Shower soap
- Bar soap
- Toothpaste & toothbrush

STORAGE

- Under bed storage
- Shoe storage
- Hangers
- Stacking drawers
- Footlocker/Trunk

*no loveseats, futons or sofas

** shower liner & hooks provided

COMMONS KITCHEN

More things you'll need

Crock pot
Rice cooker
Plate, bowl, flatware
Cups & Mugs
Colander
Cookware
Knife set & cutting board
Measuring cups & spoons
Mixing bowls
Oven Mitt
Food storage
Water bottle & travel mug
Filtered water pitcher



*Things you didn't know you needed...
until you need them!*

- Milk crates - good for storage, good for packing
- Needle & thread or sewing kit
- Rain coat & umbrella
- Backpack
- First aid kit (bandages, thermometer, cold & fever medication, cough drops)
- Flashlight and batteries
- Box fan or small fan
- Surge protector & extension cord (only UL approved three-pronged grounded)
- Emergency medical information
- Workout items: yoga mat, hand weights, etc.
- Broom and dustpan



... but please leave these at home

- Hanging materials other than thumb tacks
- Flammable or hazardous materials
- Oversized furniture
- Pets of any kind
- Firearms or Fireworks

Grow Spiritually on Campus

"I have grown spiritually on campus because I have learned what it means to trust in God." - Kayla



"I am growing spiritually on campus because I get to go to chapel twice a week where I get to listen to preachers from all around the country." - Ezekiel



"I am growing spiritually on campus because I am always being challenged and encouraged in my faith." - Ashley



"I am growing spiritually on campus because of our community worship time." - Muna



"I am growing spiritually on campus because of the godly mentors, Christlike friends, and teaching that matches God's Word." - Joel

Student Community